

PCT3 SERIES

Dehumidifying Dryer

Benefits:

- Stable process temperature and dewpoint throughout the entire drying cycle
- Process temperature/ resin temperature from the throat of the drying hopper $\pm 2^{\circ}\text{F}$ degrees
- Dry air dewpoint to -100°F resulting in faster resin drying times
- Closed loop dryer designed for immediate start up, no need to dry cycle
- FOCUS-max touch screen control
- Gas, electric or dual fuel configurations
- 300 cfm - 3,000 cfm units available
- Drying temperatures from 120°F to 375°F
- Data logging of key drying process parameters
- Minimal moving parts with a small footprint
- Advanced heat recovery and energy management that reduces utility usage resulting in lower energy cost. These include:
 - Variable frequency blower
 - Regen heat recovery
 - Water saver valve



The PCT³ series dehumidifying dryer is designed with advanced PCT technology offering one of the most energy efficient dryers available on the market today. Using the proven PCT² drying platform, PCT³ offers a closed loop drying system with minimal footprint, low dewpoint and a stable, steady performance throughout the entire drying cycle. In addition, the PCT³ features an adaptive energy optimizer, a regeneration heat recovery system and an automatic cooling water control valve for significant energy savings!

The PCT³ generates a dewpoint down to -100°F , for exceeding the industry standard. The longer tower cycle time results in a reduction of wear on components, and

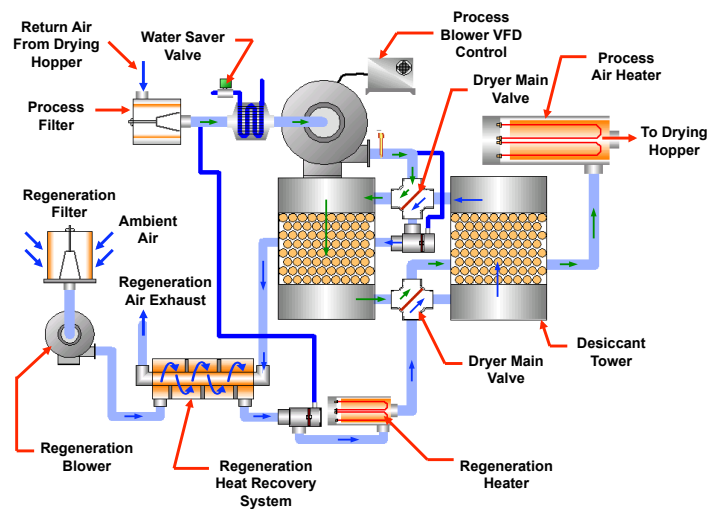
less dryer maintenance. In a 24/7 facility drying beds typically cycle about 2000 times a year. The PCT³ cycles as little as once a day or 365 times a year! Additionally, the PCT³ adjusts dryer performance to what is needed down to dry the resin.

Minimal moving parts, up to -100°F dewpoint, self-adjusting drying and rock steady setpoint temperature throughout the drying cycle are just a few performance features of this universal resin dryer. Many additional features make the PCT³ one of the most reliable, stable and energy efficient resin dryers being offered today. Standard throughput range for the PCT series dryers is 300-3,000lbs/hr with temperature range from $120-375^{\circ}\text{F}$. Gas, Electric or Dual Fuel available.

Adaptive Energy Optimizer

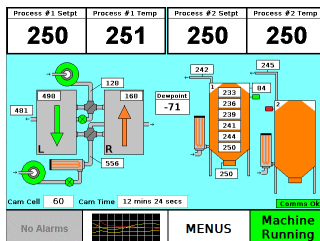
The AEO (Adaptive Energy Optimizer) automatically adjusts the performance of the dryer to optimize daily usage. Built-in smart technology requires less operator interaction and involvement; the AEO optimizer automatically determines the right amount of dry air required to optimize the resin drying process. The AEO also does the following:

- Ensures material is not over dried
- Maintains return air temperature at an optimum level for maximum adsorption by the desiccant
- Automatic process air flow regulation
- Maintains a constant air flow proportioned to the throughput rate



CONTROLS:

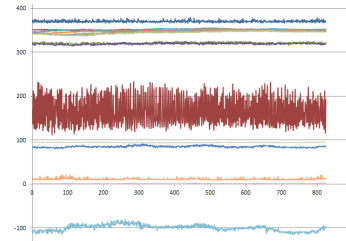
FOCUS-max Touch Screen



The FOCUS-max control is standard on the PCT³ series. The FOCUS-max is our top-of-the-line and most-capable controller. In addition to maintaining all of the features offered in our FOCUS line, the FOCUS-max

has been equipped with sixteen channels of thermocouple inputs, as well as sixteen channels each of discrete inputs and discrete outputs (I/O). These channels allow for temperature profiling of the drying hopper as well as the most comprehensive control capability.

Datalogging



The Datalogger is an events recorder powered via 24vdc that is designed to monitor the critical functions of a twin-tower. It automatically logs, as sampled data (electronically in a nonvolatile form), key

operational parameters. Recorded data is obtained by means of uniform sampling and time/date stamped. Sample rate is adjustable from 2 seconds to 2 minutes for a maximum sample of 6 days. The Datalogger communicates over separate data paths and records key parameters making it transparent and non-invasive. The Datalogger transfers all pertinent information without interfering with operation or SPI communications.