

# Vactherm RVU Series

## *Positive/Negative Pressure Temperature Controller*

### **Benefits:**

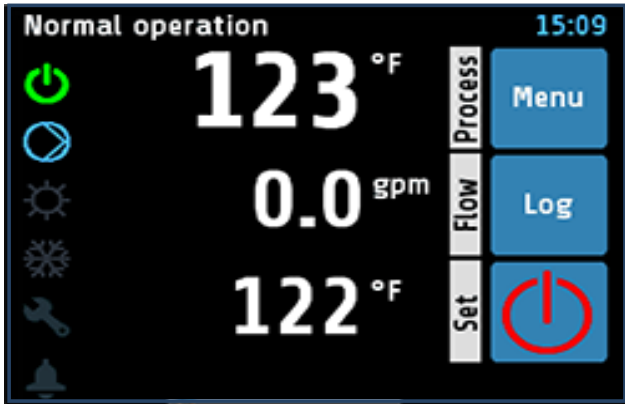
- **Positive/Negative pressure leak stopper:** Our innovative design provides the perfect balance of positive pressure to the mold and an adjustable vacuum on the return line to stop leaks and maximize cooling.
- **Stainless steel pump:** Durable stainless steel pump with proven reliability and performance eliminates maintenance and wear associated with conventional pumps.
- **Leak-proof pump:** Submerged in a large reservoir and directly connected to the pump motor on top of reservoir our pump eliminates the potential for leaky mechanical pump seals.
- **Brazed plate heat exchanger:** Built-in heat exchanger isolates the cooling source water from the mold water during cooling cycles.
- **Cooling water inlet strainer:** The heat exchanger cooling water inlet strainer removes any debris present in the cooling water to prevent costly downtime and repair due to a clogged heat exchanger. Cools the unit down to 105°F (41°C) and then sounds the alarm horn to indicate the unit is cool enough for a tool change or maintenance.
- **Warranty:** 1 year parts



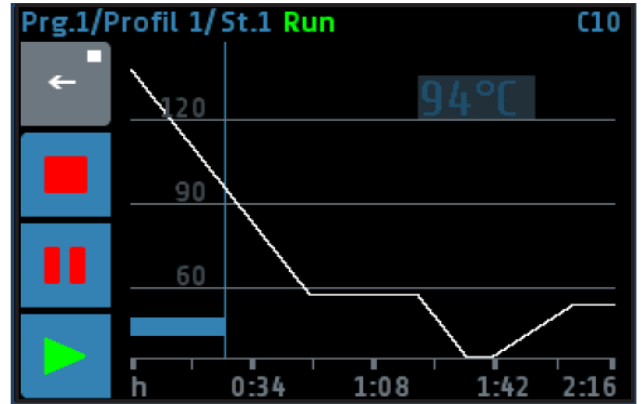
Vactherm RVU Series positive/negative temperature controllers eliminate downtime caused by a coolant leak in the mold or process water circuit. The unique design of the Vactherm allows the vacuum level to be adjusted to the exact amount necessary to stop the leakage, without drawing air into the water circuit. This provides better

temperature control at lower flow rates than competitive designs. Plus units can run as nonferrous temperature controllers even when no leak is present.

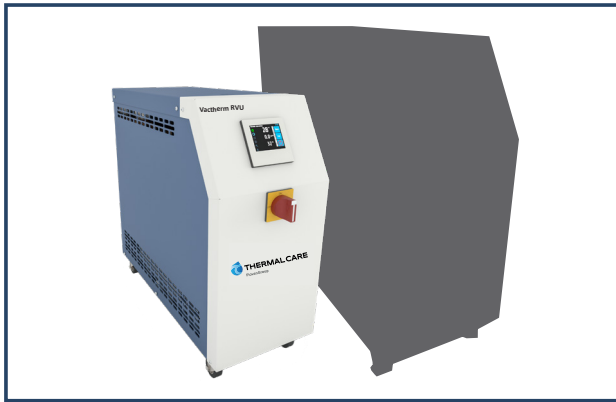




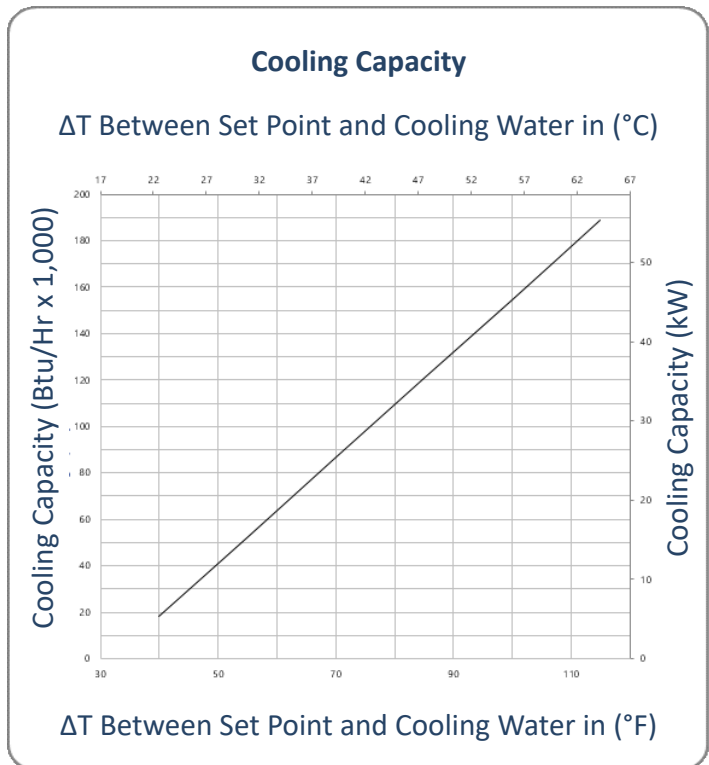
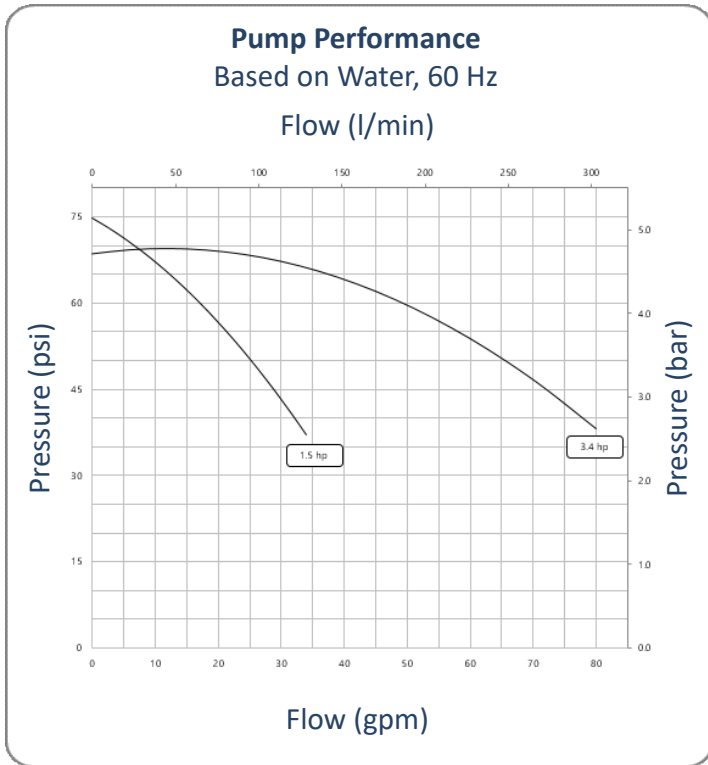
Our 3.5" touchscreen user interface has a PLC controller to provide useful information on operation, monitoring, and diagnostic data.



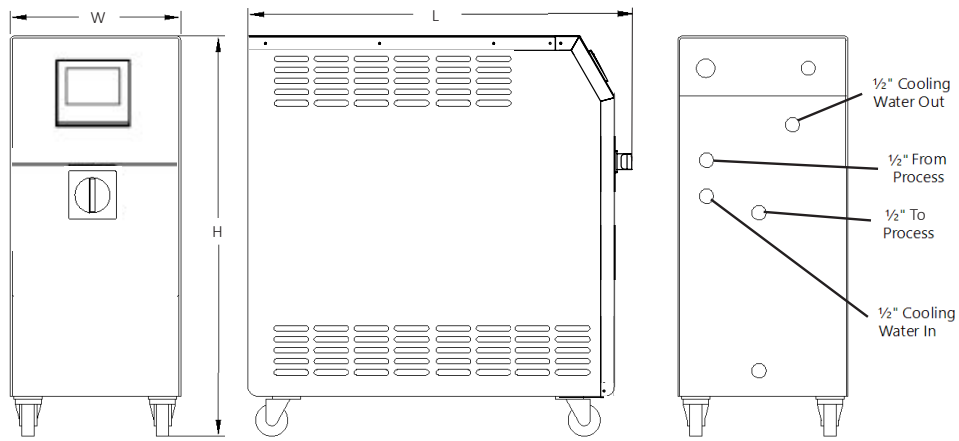
Ramp/soak programming allows for up to eight "recipes" with up to 8 steps each for heating and cooling scheduling.



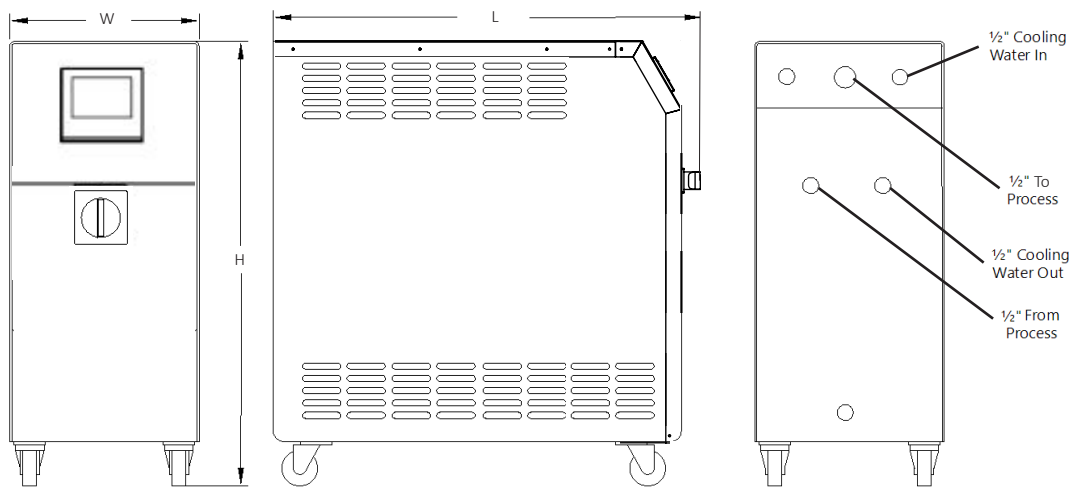
Vactherm RVU is available in two models.



**RVU0915**



**RVU0935, RVU1835 & RVU2735**



TECHNICAL DATA								
Model	Pump hp (kW)	Heater (kW)	Flow Capacity		Max. Vacuum psi (bar)	Full Load Amps (FLA) 460/3/60	Dimensions LxWxH inch (mm)	Ship Weight lbs (kg)
			gpm (l/min)	psi (bar)				
RVU0915	1.5 (1.1)	9	36 (136)	80 (5.5)	-13 (.90)	14	29x11x25 (742x269x640)	145 (66)
RVU0935	3.4 (2.5)	9	80 (303)	70 (4.8)	-13 (.90)	16	38x13x31 (968x333x780)	220 (100)
RVU1835	3.4 (2.5)	18	80 (303)	70 (4.8)	-13 (.90)	27	38x13x31 (968x333x780)	225 (102)
RVU2735	3.4 (2.5)	27	80 (303)	70 (4.8)	-13 (.90)	39	38x13x31 (968x333x780)	230 (104)

The standard set point range is 50°F to 205°F (10°C to 96°C).