

# Oiltherm ROH Series

## Hot Oil Temperature Controller

### Benefits:

- **Up to 96 kW**
- **Up to 50 GPM (189 L)**
- **Magnetic drive stainless steel pump<sup>1</sup>:** Improves reliability and performance and eliminates maintenance and wear associated with mechanical seals.
- **Touchscreen controller:** 3.5" controller shows actual and set point simultaneously and allows for additional variable information on the display.
- **Ramp/soak programming:** Allows for up to eight individual heating and cooling cycle programs with up to eight steps each.
- **Stainless steel heat exchanger:** High-efficiency and mounted in the hot oil reservoir is standard on all units and ensures outstanding reliability and low-maintenance.
- **Stainless steel heaters:** Elements mounted in the hot oil reservoir provide the utmost in corrosion protection to ensure a long useful life under severe industrial conditions.
- **Warranty:** 1 year parts



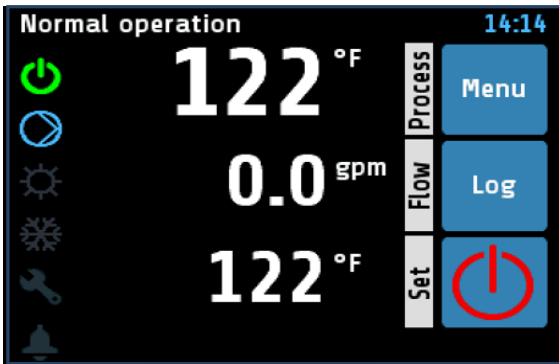
Oiltherm ROH Series units are designed to work with a wide range of high temperature applications in the 125°F to 575°F (52°C to 302°C) range. The Oiltherm assures high velocity oil flow across heater elements for optimum heat transfer and fluid life. The oil is preheated to reduce viscosity before allowing the pump to run. A PLC controller

allows customized settings for daily start/stop times and a temperature deviations alarm and a password lockout protects temperature set point.

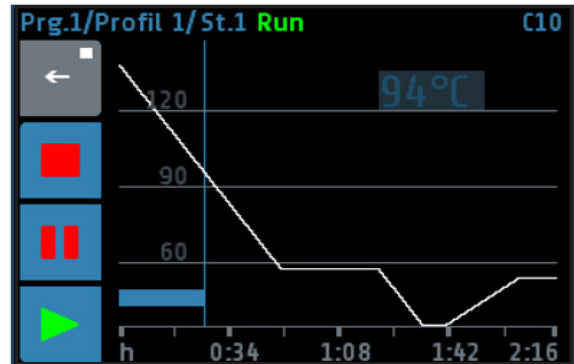
<sup>1</sup> On mid or large frame size.

**Additional Benefits:**

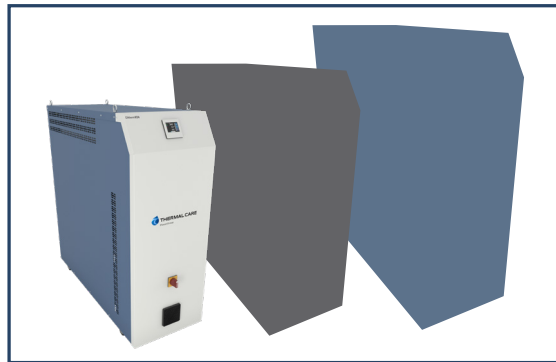
- **Automatic cool-down function:** Cools the mold and oil in the unit down to 122°F (50°C) and automatically stops the pump to make a tool change or maintenance quick and easy.
- **Negative pressure mold drain option<sup>2</sup>:** This option allows positive pressure oil from the pump to go through a unique venturi on the oil return line to drain oil from the mold back into the reservoir.



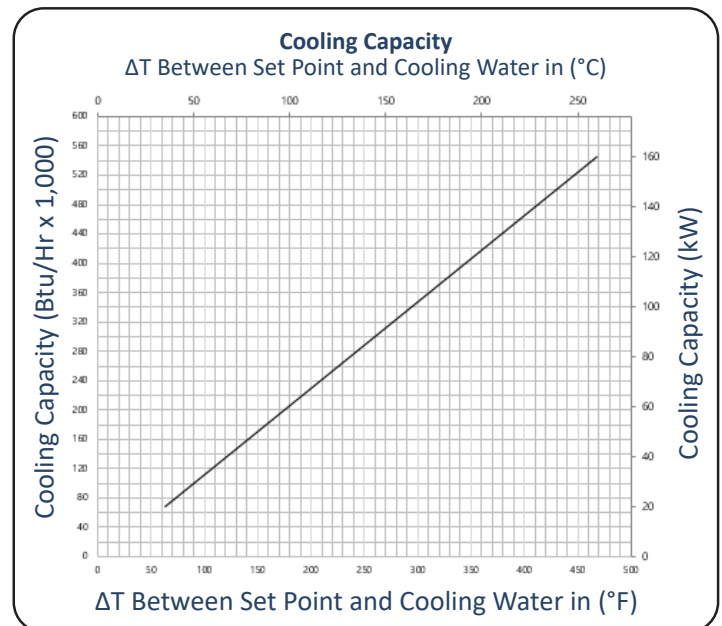
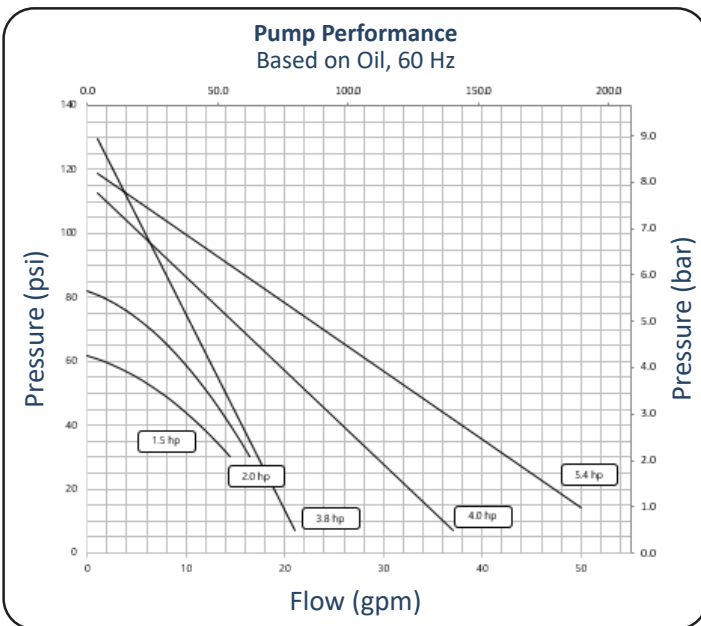
Our 3.5" touchscreen controller shows actual and set point simultaneously and allows for additional variable information on the display.



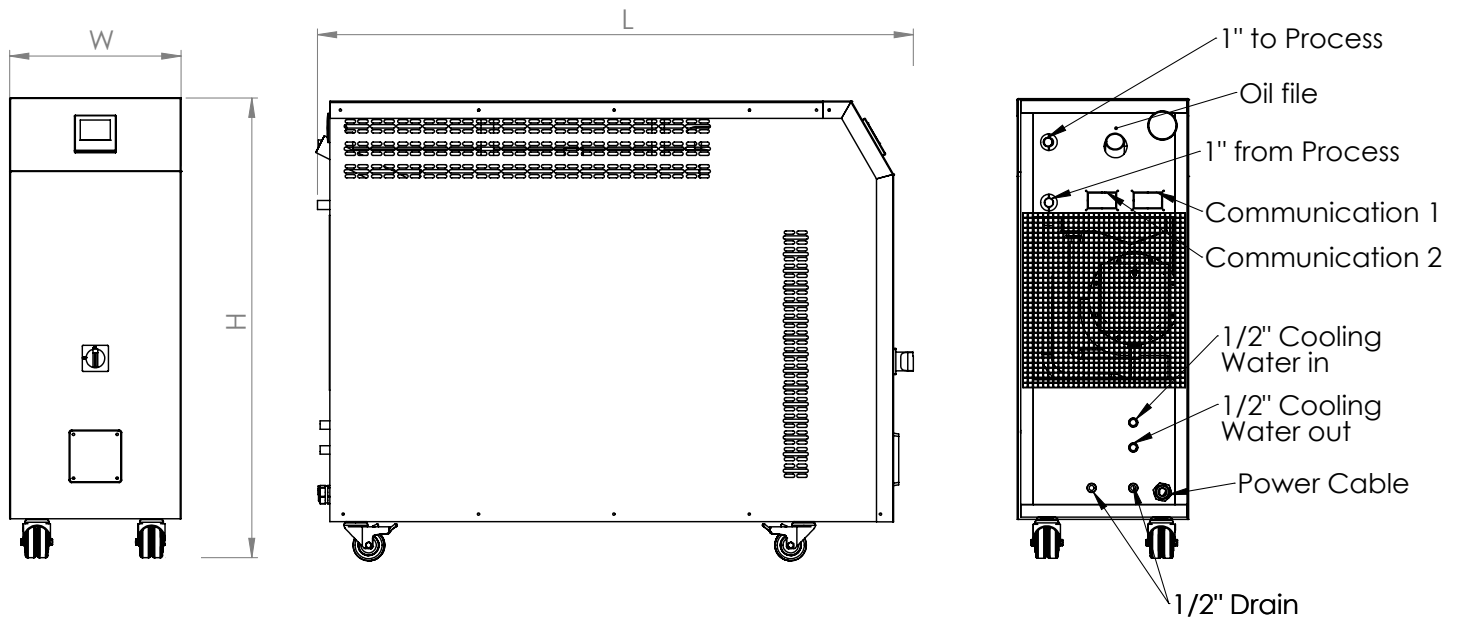
Ramp/soak programming allows for up to eight individual heating and cooling cycle programs with up to eight steps each.



Oiltherm ROH is available in three sizes.



<sup>2</sup> Option available only on the small frame size.



TECHNICAL DATA										
Model	Pump hp (kW)	Heater (kW)	Pump Capacity		Tank Volume gal (l)	Tank Expansion Volume gal (l)	Full Load Amps (FLA) 460/3/60	Voltage	Dimensions L x W x H inch (mm)	Ship Weight lbs (kg)
			GPM (l/min)	PSI (bar)						
ROH0615	1.5 (1.1)	6	10 (38)	44 (3.0)	7.1 (27)	6.1 (23)	11.7	230/460/575	34 x 13 x 35 (855 x 330 x 890)	118 (54)
ROH0615V	1.5 (1.1)	6	10 (38)	40 (2.8)	7.1 (27)	6.1 (23)	11.7	230/460/575	34 x 13 x 35 (855x330x890)	118 (54)
ROH1220	2 (1.5)	12	13 (49)	46 (3.2)	7.1 (27)	6.1 (23)	18.7	230/460/575	34 x 13 x 35 (855 x 330 x 890)	120 (54)
ROH1220V	2 (1.5)	12	13 (49)	40 (2.8)	7.1 (27)	6.1 (23)	18.7	230/460/575	34 x 13 x 35 (855x330x890)	120 (54)
ROH1820	2 (1.5)	18	13 (49)	46 (3.2)	12.9 (49)	7.1 (27)	24.4	230/460/575	34 x 13 x 35 (855 x 330 x 890)	144 (65)
ROH1820V	2 (1.5)	18	13 (49)	40 (2.8)	12.9 (49)	7.1 (27)	24.4	230/460/575	34 x 13 x 35 (855x330x890)	144 (65)
ROH2420	2 (1.5)	24	13 (49)	46 (3.2)	17.2 (65)	2.9 (11)	33.3	230/460/575	34 x 13 x 35 (855 x 330 x 890)	148 (67)
ROH2420V	2 (1.5)	24	13 (49)	40 (2.8)	17.2 (65)	2.9 (11)	33.3	230/460/575	34 x 13 x 35 (855x330x890)	148 (67)
ROH3620	2 (1.5)	36	13 (49)	46 (3.2)	17.2 (65)	2.9 (11)	45.2	230/460/575	34 x 13 x 35 (855 x 330 x 890)	155 (70)

Standard set point range is 125°F to 575°F (52°C to 302°C).

Unit models ending in a "V" are units equipped with the negative pressure mold drain option.

TECHNICAL DATA										
Model	Pump hp (kW)	Heater (kW)	Pump Capacity		Tank Volume gal (l)	Tank Expansion Volume gal (l)	Full Load Amps (FLA) 460/3/60	Voltage	Dimensions L x W x H inch (mm)	Ship Weight lbs (kg)
			GPM (l/min)	PSI (bar)						
ROH3620V	2 (1.5)	36	13 (49)	40 (2.8)	17.2 (65)	2.9 (11)	45.2	230/460/575	34 x 13 x 35 (855 x 330 x 890)	155 (70)
ROH1237	3.75 (2.8)	12	21 (80)	145 (10)	5.5 (21)	4.5 (17)	17	230/460/575	53 x 16 x 43 (1353 x 411 x 1103)	188 (85)
ROH2437	3.75 (2.8)	24	21 (80)	145 (10)	5.5 (21)	4.5 (17)	32	230/460/575	53 x 16 x 43 (1353 x 411 x 1103)	188 (85)
ROH3637	3.75 (2.8)	36	21 (80)	145 (10)	5.5 (21)	4.5 (17)	47	230/460/575	53 x 16 x 43 (1353 x 411 x 1103)	197 (89)
ROH4837	3.75 (2.8)	48	21 (80)	145 (10)	5.5 (21)	4.5 (17)	62	230/460/575	53 x 16 x 43 (1353 x 411 x 1103)	197 (89)
ROH6037	3.75 (2.8)	48	21 (80)	145 (10)	5.5 (21)	4.5 (17)	77	230/460/575	53 x 16 x 43 (1353 x 411 x 1103)	200 (91)
ROH1240	4 (3)	12	37 (150)	145 (10)	5.5 (21)	4.5 (17)	17	230/460/575	53 x 16 x 43 (1353 x 411 x 1103)	191 (87)
ROH2440	4 (3)	24	37 (150)	145 (10)	5.5 (21)	4.5 (17)	32	230/460/575	53 x 16 x 43 (1353 x 411 x 1103)	191 (87)
ROH3640	4 (3)	36	37 (150)	145 (10)	5.5 (21)	4.5 (17)	47	230/460/575	53 x 16 x 43 (1353 x 411 x 1103)	200 (91)
ROH4840	4 (3)	48	37 (150)	145 (10)	5.5 (21)	4.5 (17)	62	230/460/575	53 x 16 x 43 (1353 x 411 x 1103)	200 (91)
ROH6040	4 (3)	60	37 (150)	145 (10)	5.5 (21)	4.5 (17)	77	230/460/575	53 x 16 x 43 (1353 x 411 x 1103)	203 (92)
ROH7240	4 (3)	72	37 (150)	127 (8.8)	7.6 (29)	6.3 (24)	91	460/575	53 x 19 x 59 (1353 x 490 x 1500)	225 (102)
ROH9640	4 (3)	96	37 (150)	127 (8.8)	7.6 (29)	6.3 (24)	121	460/575	53 x 19 x 59 (1353 x 490 x 1500)	243 (110)
ROH7254	5.4 (4)	72	50 (189)	127 (8.8)	7.6 (29)	6.3 (24)	92	460/575	53 x 19 x 59 (1353 x 490 x 1500)	235
ROH9654	5.4 (4)	96	50 (189)	127 (8.8)	7.6 (29)	6.3 (24)	122	460/575	53 x 19 x 59 (1353 x 490 x 1500)	253

Standard set point range is 125°F to 575°F (52°C to 302°C).

Unit models ending in a "V" are units equipped with the negative pressure mold drain option.