

FC Series Fiberglass Cooling Tower



FC740 Cooling Tower

Stainless Steel Fasteners

Stainless steel fasteners provide added strength and corrosion resistance for long life and durability in severe environmental conditions.

PVC Fill and Internal Piping

Optimal efficiency and long life with low maintenance and no concern of rust or corrosion typical of galvanized steel towers.

Fiberglass Inlet Louvers

Air inlet louvers kept unwanted debris and animals out of the basin and ensure water splashes in the basin stay in the tower.

Pressurized Water Distribution System

Pressurized, nonferrous fixed spray nozzles with large non-clogging openings mounted in PVC distribution piping for trouble-free operation.

Factory Assembled

Fully assembled with motor and fan removed to prevent shipping damage makes installation quick and easy.

Warranty

- 10 year parts on fiberglass shell
- 5 year parts on fan motor warranty
- 1 year parts on complete cooling tower

Standard Features

Fiberglass Construction

Corrosion resistant rugged fiberglass withstands harsh weather and industrial manufacturing environments.

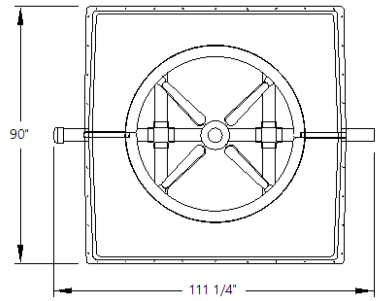
Direct Drive Fan Motor

Direct drive motor with permanently sealed bearing connected direct to fan to eliminate motor bearing, belt, pulley, and gear box maintenance.

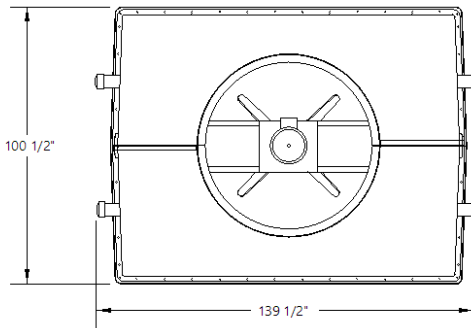
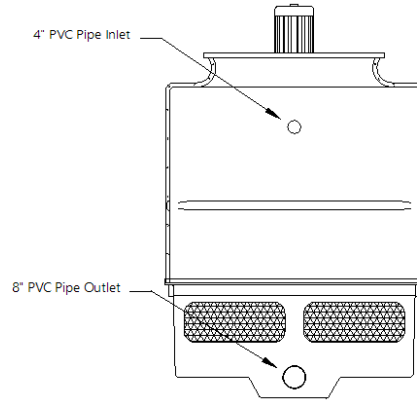
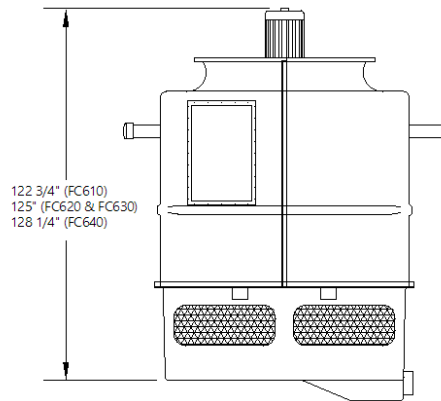
Model	Cooling Tons ¹	Fan Motor		Nominal Flow (gpm)	Inlet Pressure Required (psi)	Operating Range (gpm)	Shipping Weight (lbs)	Operating Weight (lbs)
		hp	FLA @ 460/3/60					
FC610	100	3	6	300	6	200 to 600	1,760	4,535
FC620	115	5	9	345	4	200 to 600	1,910	4,535
FC630	125	5	9	375	4	200 to 600	1,910	4,685
FC640	140	7½	12	420	5	200 to 600	2,150	4,925
FC710	170	7½	12	510	5	350 to 725	2,660	5,230
FC720	185	10	17	555	6	350 to 725	2,700	5,530
FC730	205	10	17	615	7	350 to 725	2,700	5,570
FC740	240	15	24	720	10	350 to 725	2,750	5,570

¹Cooling Tons based on 15,000 BTU/Hr/ton with 85°F leaving water, 78°F wet bulb and 3 gpm/ton tower water.

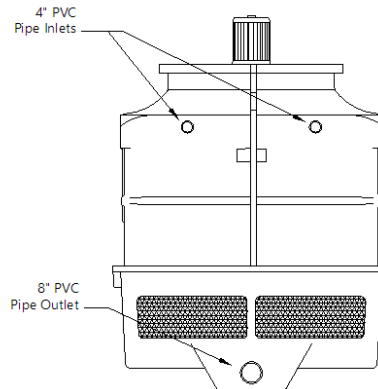
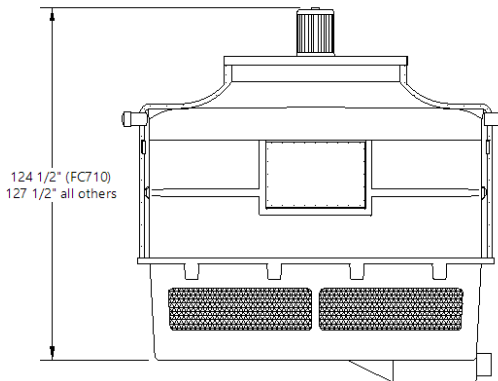
FC Series Fiberglass Cooling Tower



FC600 Series



FC700 Series



THERMAL CARE

Piovan Group

5680 W. Jarvis Ave • Niles, IL 60714

847.966.2260 • sales@thermalcare.com

www.thermalcare.com

January 2024

Thermal Care is ISO-9001 Certified
Manufacturer reserve the right to change specification
or design without notification or obligation

FC Specification 01