

Accuchiller TCFW350 Central Chiller



100-ton Single-Circuit Chiller

Standard Features

Variable Speed Compressor

Direct-drive variable-speed centrifugal compressor technology continuously adjusts speed to match load to reduce operating costs.

Magnetic Bearing

A magnetic field levitates the drive shaft and eliminates the friction of conventional bearings for higher efficiencies and an oil-free refrigeration system.

Integral Variable Speed Drive

High-efficiency brushless DC motor with built-in variable-speed drive technology is refrigerant cooled, compact, and energy efficient.

Soft-Start

The variable speed drive limits soft-starts to 2 amps inrush current per compressor to reduce peak energy demand and extend compressor motor life.

Low Noise Operation

The magnetic bearings keep the drive shaft in position under high-speed operation for virtually no structural vibration and low noise.

Compressor Rotary Circuit Breaker

A through-the-door rotary circuit breaker for each compressor allows easy maintenance of a compressor without the need to shut down power to the chiller.

UL 508A Industrial Control Panel

Every chiller has a UL label certifying our panel design and components comply with UL 508A standards ensuring the panels are safe and consistent for reliable operation.

Hybrid Film Evaporator

Advanced design provides the most efficient heat transfer while minimizing the refrigerant charge requirement results in a compact, extremely energy-efficient unit.

Advanced Controls with Color Touch Screen

7-inch color touch screen shows chiller operation for quick and easy monitoring and control of the system. Our advanced PLC system can control up to six chillers.

TC SERIES		THERMAL CARE PiovonGroup		HOME
SYSTEM RUNNING				
PROCESS SETPOINT	50.0 °F	DKT1 DEMAND	30 %	
PROCESS SUPPLY	49.7 °F	STATUS	RUNNING	
PROCESS RETURN	59.7 °F	COMP(S) ON	1	
PROCESS DELTA T	10.0 °F	CAPACITY	0.0 TON	
CONDENSER IN	85.0 °F			
CONDENSER OUT	105.0 °F			
← 🏠 🔔 🔔 🔌				

Modular Expandable System

Our modular system design allows for flexible system design and provides for system expansion to over 600 tons using up to six chillers.

CONNEX4.0 Ready Controls

Every chiller is equipped with an Ethernet port and is fully compatible with the CONNEX4.0 plant-wide equipment control and monitoring system.

Warranty

1 year parts
1 year labor

Available Options

BACnet Communications Port

Adds a Modbus to BACnet gateway wired to a RS-485 connector on the control panel.

Industrial PC with Ethernet

Used for remote access.

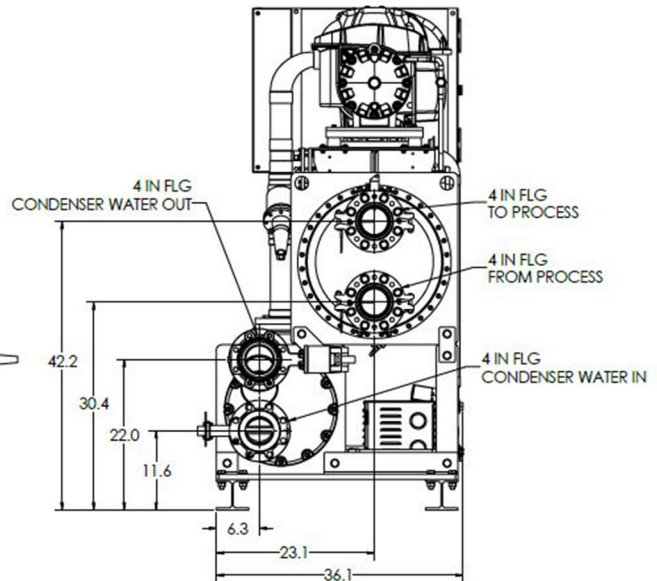
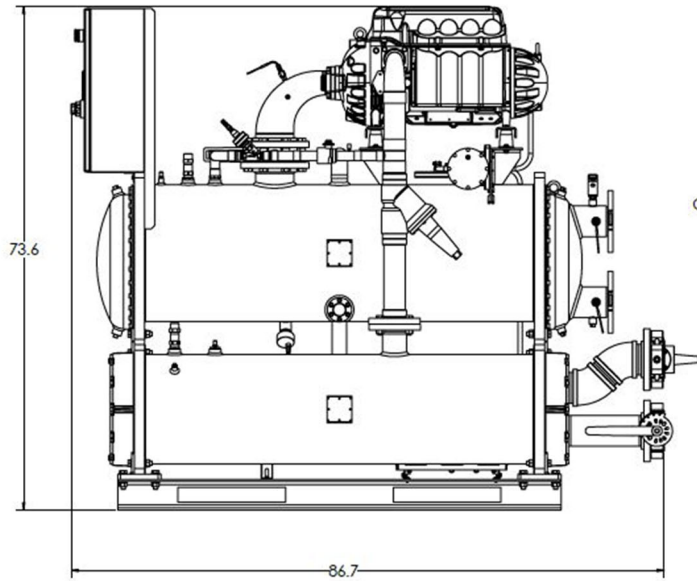
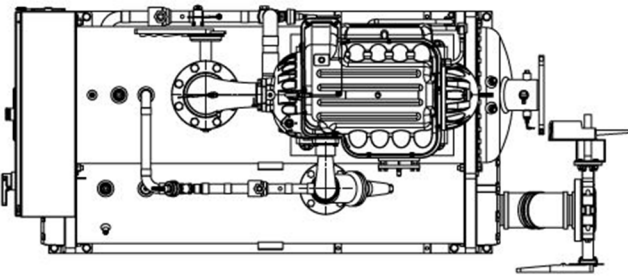
Accuchiller TCF Central Chiller

Model TCFW350	
Cooling Capacity Range (ton) ¹	40 to 120
Set Point Range (°F)	40 to 75
Compressor (qty)	1
Shipping Weight (lbs)	3,400
Operating Weight (lbs)	3,800
MCA @ 460/3/60 (amps) ²	229
MOP @ 460/3/60 (amps) ³	400

¹Cooling capacity when cooling water with 50°F set point, 60°F return, 85°F condenser water, R134a refrigerant.

²MCA is Minimum Circuit Amps under full load, used for minimum wire size requirement.

³MOP is Maximum Overcurrent Protection, used for sizing main power protection device.



Piovan Group

5680 W. Jarvis Ave • Niles, IL 60714

847.966.2260 • sales@thermalcare.com

www.thermalcare.com

January 2024

Thermal Care is ISO 9001 Certified
 Manufacturer reserve the right to change specification
 or design without notification or obligation

TCFW350 Specification 07