

# HIGH CAPACITY MIXERS

## *Vertical Auger*

*Smart Solutions To Keep You Moving!*

The *Typhoon* high capacity vertical auger mixer is designed to quickly, efficiently and economically create a homogenous mixture of free flowing bulk solid materials. The 12"-16" OD industrial auger lifts material up from the bottom of the hopper and disperses it evenly over the top.

This proven line of mixers easily handles materials to include pellets, flakes and granules.

A large range of capacities are offered in addition to several loading / discharge capabilities. There are many options available to help meet your specific process requirements as well.

### **Key features:**

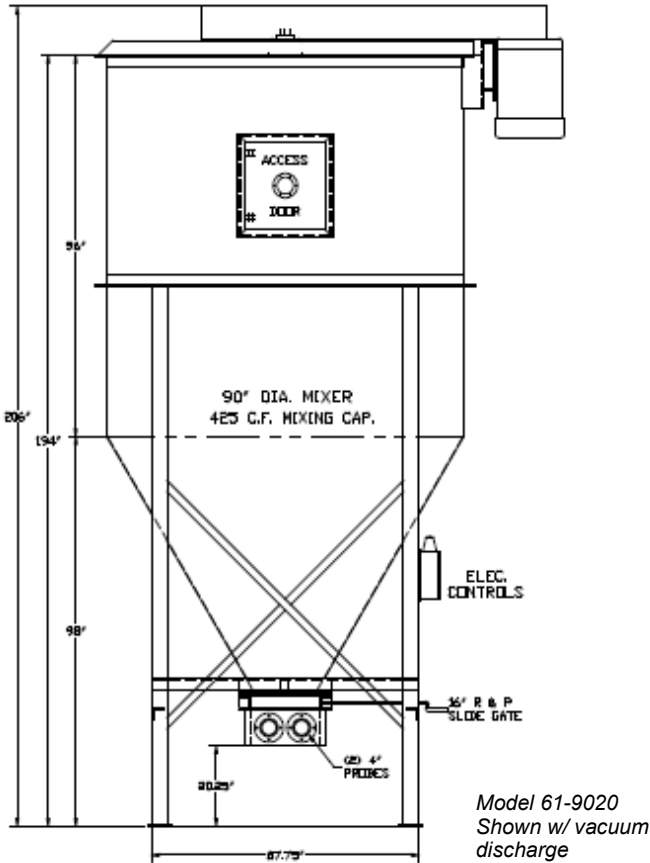
- Heavy duty welded construction
- Industrial grade augers
- TEFC high efficiency motors
- Multi-belt drive system
- HD top drive bearing
- 60 degree cone
- Discharge slide gate
- Pneumatic, auger or dumper filling
- Pneumatic, auger or gravity discharge
- Easily integrates with Ensign's automated bulk bag filling system
- Lube free lower composite bushing for low maintenance operation
- Smart maintenance features
- Industry leading two year warranty on all parts and workmanship

*See back page for additional options and specifications.*



*Mixer shown with vacuum loader and integrated bulk bag filling system*

# High Capacity Mixers



## Standard Features:

- Heavy duty welded construction
- 60 degree cone
- Lube free composite lower auger bushing
- 12" - 16" slide gate
- NEMA 12 panel w/ start / stop
- Programmable Allen Bradley digital timer
- AB safety switches at all access points
- 7.5HP—50HP TEFC motors
- Multi-belt drive
- Remote grease block for top bearing
- Loader mounting pattern
- Side or top access hatch
- Bolt down foot pads
- Ensign Blue industrial epoxy exterior

## Optional Features:

- Integrated bulk bag or Gaylord filler
- UL control panels
- Stainless steel construction
- Easy Clean package
  - Fully welded auger flighting
  - Hinged auger tube access door
- Dumper fill chute
- Extended legs for gravity discharge
- Auger discharge
- Vacuum discharge
- Work / access platforms w/ ladder
- UL control panels

Model #	Diameter	Capacity	Auger	Motor HP
61-6000	60"	75 cf	9"	7.5-10
61-6010	60"	94 cf	9"	7.5-10
61-6020	60"	113 cf	9"	7.5-10
61-7200	72"	143 cf	12"	10-15
61-7210	72"	171 cf	12"	10-15
61-7220	72"	200 cf	12"	10-15
61-7230	72"	228 cf	12"	10-15
61-9000	90"	250 cf	14"	20-40
61-9010	90"	335 cf	14"	20-40
61-9020	90"	425 cf	14"	20-40
61-9030	90"	550 cf	14"	20-40
62-1400	120"	730 cf	16"	40-50
62-1500	120"	970 cf	16"	40-50
62-1600	120"	1125 cf	16"	40-50
62-1700	120"	1300 cf	16"	40-50