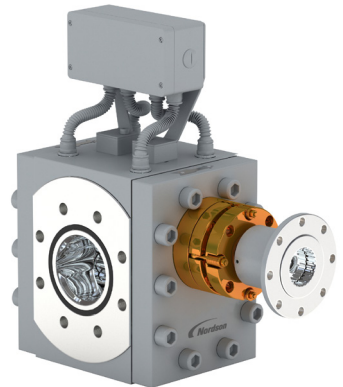


BKG® BlueFlow™ Gear Pump GPA

BKG gear pump type GPA is mainly designed for the discharge of low viscosity melts, such as, adhesives or polyamides out of reactor vessels or mixing and storage tanks. Additionally, they are used for low viscous materials in extrusion processes.

Features

Type:	GPA
Application:	For the discharge of low to medium viscous melts from reactor vessels and tanks
Feature:	Process-specific connection geometry Special sealing system
Optional:	Liquid tempered



Benefits

- Discharge pumps designed specifically for low viscosity melts
- Pump inlet optimized to maximize filling performance through various channel geometries
- Drive-side threaded shaft seal with stuffing box packing leads to reduced operating costs
- Borings for pressure and temperature sensors integrated in the pump housing provides enhanced process diagnostic capabilities
- Optimized operating clearances to process polymers with a low viscosity

Technical Information

Throughput	150 – 12,800 kg/h (330 – 28,219 lbs/hr)
Specific volume	25.6 – 3,200 cm ³ / rev (1.56 – 195,3 in ³ /rev)
Viscosity	5 – 2,000 Pas
Temperature	up to 450°C (842°F)
Heating	Electric or Fluid
Pump outlet	max. 265 bar (3,843 psi)
Pump inlet	1 – 15 bar (14.5 – 217,56 psi)
Differential pressure	max. 250 bar (3,626 psi)

Nordson PPS GmbH
Coermühle 1
48157 Münster / Germany
+49.251.21405.0 **Phone**

USA
+1.828.326.9888 **Phone**

China
+86.21.57850918 **Phone**

www.nordsonpolymerprocessing.com | info@nordsonpolymerprocessing.com
© 2016 Nordson PPS GmbH
Printed in USA
8/2016

