

PowerMax-HP

Positive Displacement Pump

Benefits:

- Quiet operation - with full sound enclosure
- Attractive stainless steel enclosure
- Compact design optimizes production floor space
- Easy component access through modular panel design
- Vacuum breaker valve for fast cycle loading
- Pumps available in 3, 5, 7.5, 10 and 15HP
- Single or multi-pump configuration



The PowerMax-HP unique design delivers a quiet operation that surpasses minimum OSHA noise requirements. Starter, vacuum switch, safety relief valve and full sound enclosure are standard features on each pump.

Compact, durable and attractive, the PowerMax-HP features a mirrored stainless steel outer finish with modular panels for easy access to all internal components. Designed to minimize floor space as well as noise reduction, high quality components provide the reliability you expect. The PowerMax-HP delivers the

maximum vacuum level within the line size and the integral vacuum breaker valve ensures maximum performance for fast cycle loading.

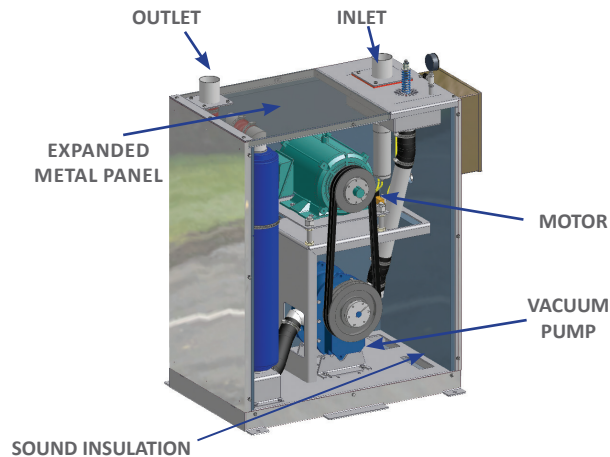
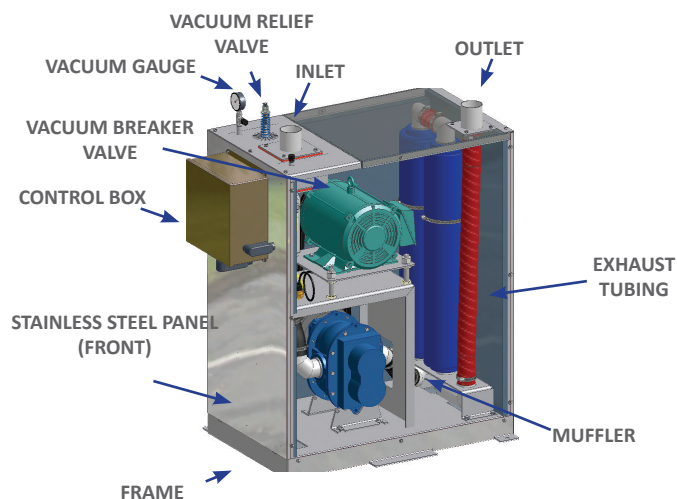
Available in single or multi-pump configurations, to address many conveying needs within one pump housing. The PowerMax-HP can be configured with up to three pumps on a common platform. The system includes valves and piping for a rapid changeover and is particularly useful when using one of the pumps as a spare or for preventive maintenance. PowerMax-HP, when you want the very best at the heart of your conveying system!

Una-Dyn

A Piovan Company

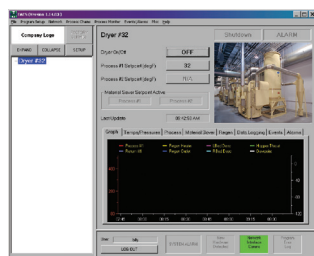
www.unadyn.com

Specifications and Multi-Pump Configuration



CONTROLS

Factory Acquisition Control System - F.A.C.S



F.A.C.S. permits control of material conveying systems as well as monitoring of Maguire blenders, silo inventory, and most SPI compatible equipment such as dryers, mold temperature control units and chillers.

The two-wire power and communications network, in conjunction with the Windows platform, makes this system economical and easy to install, setup and operate. The system is also simple to expand and re-configure.

Users can import drawings and pictures to show system configurations or locations of equipment through a PC, the user can control or monitor system performance from the plant floor. With process chain analysis and verification it is possible to set up, monitor and record setpoints, equipment performance, define material flow paths and equipment selection with a single command. F.A.C.S. has full graphing capabilities and a built in SQL database to process all your information and store it with a complete set of reports for immediate or future use.

24/7 Control



The 24/7 loader is the most advanced, versatile, and user-friendly central loading system available. Easily configured, its full-color, LCD touchscreen (both 5.7" & 10.4" sizes available as single or dual) provides for intuitive

operation & maximum information. The expandable & flexible 24/7 loader can be configured to operate as many as 36 stations, 9 pumps (with automatic pump-swapping), 16 global purge &/or dual-inlet valves, as well as many available other options available at the station level.