

# VANTAGE Series

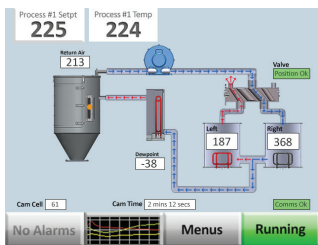
## Dehumidifying Dryer

### Benefits:

- Aesthetic and functional energy efficient design
- Easy access to all electrical and mechanical components
- 5.7" color FOCUS touchscreen control with onboard graphing and datalogging
- Portable or press side configuration
- 7-day clock may be programmed to start drying resin during off hours
- Drying hopper sight glass for visual monitoring of resin level and flow
- Throughputs from 20-200PPH
- VANTAGE rotary valve for positive and stable air distribution to the desiccant beds
- Minimal moving parts - just two - VANTAGE valve and blower. Simple and reliable design



### FOCUS Touch Screen Control



The FOCUS controller provides the latest in advanced capabilities for all small, electric dryers. Implemented using the most current technology, it provides for a small package that is nonetheless

feature-packed and user-friendly. Its full-color, 5.7" LCD touchscreen provides for intuitive feel and comprehensive drying operations and diagnostics. All FOCUS controls are dual-LCD capable for both local and remote operation. Built-in data logging capability is included in all FOCUS controllers and important operating parameters can be graphed onscreen, downloaded into an Excel spreadsheet, and can be displayed and controlled by an available FACS monitoring system. An optional, plug-on, dual-VCL controller allows any FOCUS dryer to also provide conveying operations for one or two material chambers – no separate loader controller required.

### Benefits:

- User friendly 5.7" color touchscreen control
- For dual drying hopper applications (electric only) supports dual dryer and dual loader control
- Extensive built-in, self-diagnostics included
- Supports two alarm indicators supported (audio & visual)
- Datalogs up to 40 hrs of key process variables
- SPI communications port included
- USB port for data download included
- On screen key process variable graphing

# Una-Dyn

A Piovan Company

[www.unadyn.com](http://www.unadyn.com)

## VANTAGE Valve



### **Benefits:**

- Compact and simple design
- No seals, no maintenance
- Square drive shaft with more contact points
- Less pressure drop increases dryer performance and efficiency
- Mechanical break to insure accuracy of valve rotation

## VANTAGE Stand



A sleek design permits easy access to all dryer, loader, and resin take away components.

The design supports cylinder mounted drying hoppers for stability and support. Models can be configured as portable or beside the press.

## TSC Series Drying Hopper



Well insulated and energy efficient, the TSC series drying hoppers not only look great, they perform better! Unique design features ensure excellent distribution of dehumidified air throughout the hopper. A liftable, smooth interior solid cone, drain port, material shutoff and large double insulated access doors result in minimal cleaning and material changeover time. Reduced energy costs and design advantages add up to a drying hopper that is second to none in looks and performance!

### **Benefits:**

- Mirrored stainless steel construction
- Insulated from lid to discharge flange
- No ledge interior for consistent resin flow
- No perforated diffuser cone
- Oversized double access door
- Large side view sight glass
- Material hopper slide gate - shut off material flow at the molding machine
- Quick material change
- Easy to clean



Lift Up Cone and No Ledge Interior